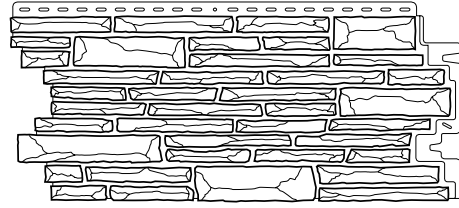


Stacked Stone

Panel and Corner Dimensions

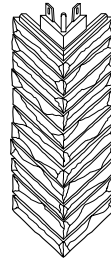
Panel

Dimensions	
overall	44 1/2" x 19 1/2" (1130 x 495 mm)
exposed	40" x 18 1/8" (1016 x 467 mm)
Material	Mineral filled polypropylene composite
Pieces per carton	10
Approx sq. ft. per carton	50 sq. ft. (4.65 sq m)
Carton weight	50 lbs. (22.7 kg)
Carton size	46" x 20 3/8" x 10 5/8" (1168 x 518 x 270 mm)
Carton Volume	6.77 cu. ft. (0.192 cu m)



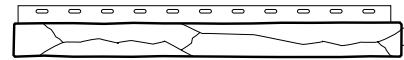
Corner

Dimensions	
overall	6 1/2" x 6 1/2" x 21" (165 x 165 x 533 mm)
exposed	6 1/2" x 6 1/2" x 18 1/8" (165 x 165 x 467 mm)
Material	Mineral filled polypropylene composite
Pieces per carton	6
Approx sq. ft. per carton	9.2 lin. ft. (2.8 m)
Carton weight	10 lbs. (4.6 kg)
Carton size	20" x 20 5/8" x 8" (608 x 524 x 203 mm)
Carton Volume	1.91 cu. ft. (0.054 cu m)



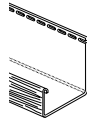
Ledge

Dimensions	32" x 1 3/7" x 1 1/8" (813 x 45 x 48 mm)
Material	Mineral filled polypropylene composite
Coverage, per carton	26.75 lin. ft. (8.1 m)
Pieces per carton	10
Carton weight	12 lbs. (5.5 kg)
Volume per carton	0.7 cu. ft. (0.02 cu m)



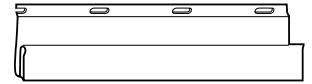
Coordinating Accessories

J-Channel 1 1/8" Opening



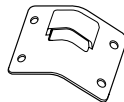
Packaged	275 lin. ft. (83.6 m), 22 pcs./carton or 300 lin. ft. (91.2 m), 24 pcs./carton
Pieces per carton	22 or 24
Length	12' 6" (3.8 m)
Weight	30 lbs. / 13.6 kg (22ct); 33lbs. / 15.0 kg (24ct)
Material	Polyvinyl Chloride (PVC)
Finish	Matte

Universal Starter Strip



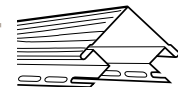
Coverage	250 lin. ft. (76 m)
Pieces per carton	25
Length	10' (3.0 m)
Weight	39 lbs. (17.7 kg) per carton
Material	Galvanized steel

Universal Corner Starter Clip



Packaged	2 pieces provided in each carton of Stacked Stone
Material	Polypropylene
Use With	Stacked Stone Corners

3 3/4" Outside Corner Post 1 1/8" Opening



Packaged	100 lin. ft. (30.5 m)
Pieces per carton	10
Length	10' (3.0 m)
Weight	53 lbs. (24.1 kg) per carton
Material	Polyvinyl Chloride (PVC)
Finish	Wood Grain

Mortar Fill



Container	Tube
Pieces per carton	12
Carton volume	0.4 cu. ft. (0.008 cu m)
Carton weight	17 lbs. (7.7 kg)
Available colors	Sierra Brown, Granite Grey Desert Sunset, Ivory, Sandstone

Authentic Exteriors for Life™

* Colors shown are as accurate as the printing process enables. Please view actual panels prior to making your purchase. Sample panels are available at www.exteriabp.com.

For more information on Exteria and its wide variety of state-of-the-art building products, please call us at 888.300.0070 or visit us on the web at www.exteriabp.com Fax orders to 877.471.0562

Exteria™
BUILDING PRODUCTS